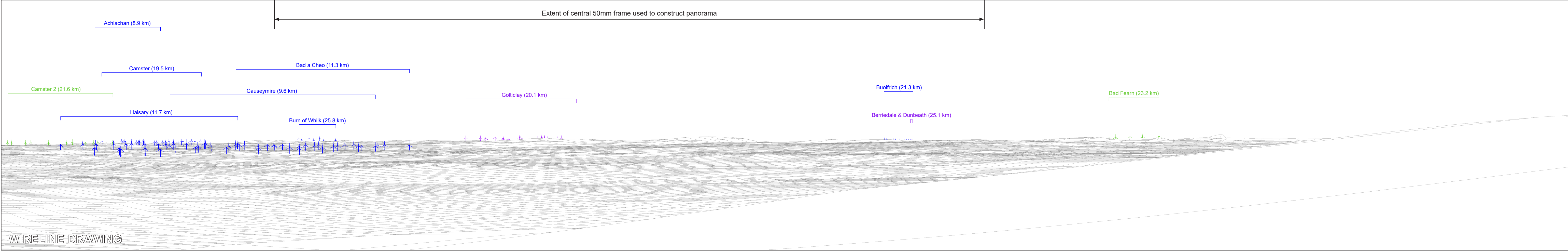




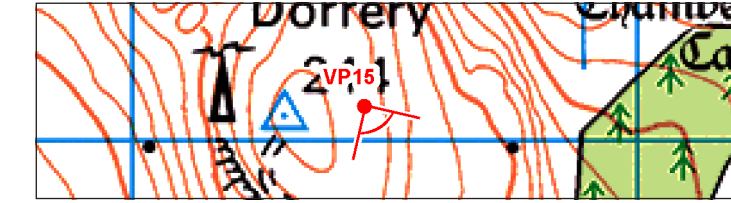
BASELINE PHOTOGRAPH

THIS IMAGE PROVIDES LANDSCAPE AND VISUAL CONTEXT ONLY



WIRELINING DRAWING

Hollandmey Renewable Energy Development
Figure: 7.28-NS-02
Viewpoint 15: Ben Dorrery
Baseline & Cumulative Wireline: Panel 2



Notes:
 1) This visualisation is a cylindrical projection panorama.
 2) This data has been output directly from the wireline model. It ignores screening effects of woodland and other intervening objects.
 3) All directions given as bearings relative to Grid North (BNG).
 4) Location map scale: OS 1:50,000 mapping shown at 1:15,000.

Contains Ordnance Survey data © Crown copyright and database right 2021
 © Crown copyright. All rights reserved. 2021 Licence number 0100031673

Viewpoint Information	
Grid Reference:	306463E 955068N
Ground Height:	232 m AOD
Direction of Centre View: ¹	148°
Horizontal Field of View:	90° (Cylindrical Projection)
Vertical Field of View:	14.2°
Principal Distance:	522 m

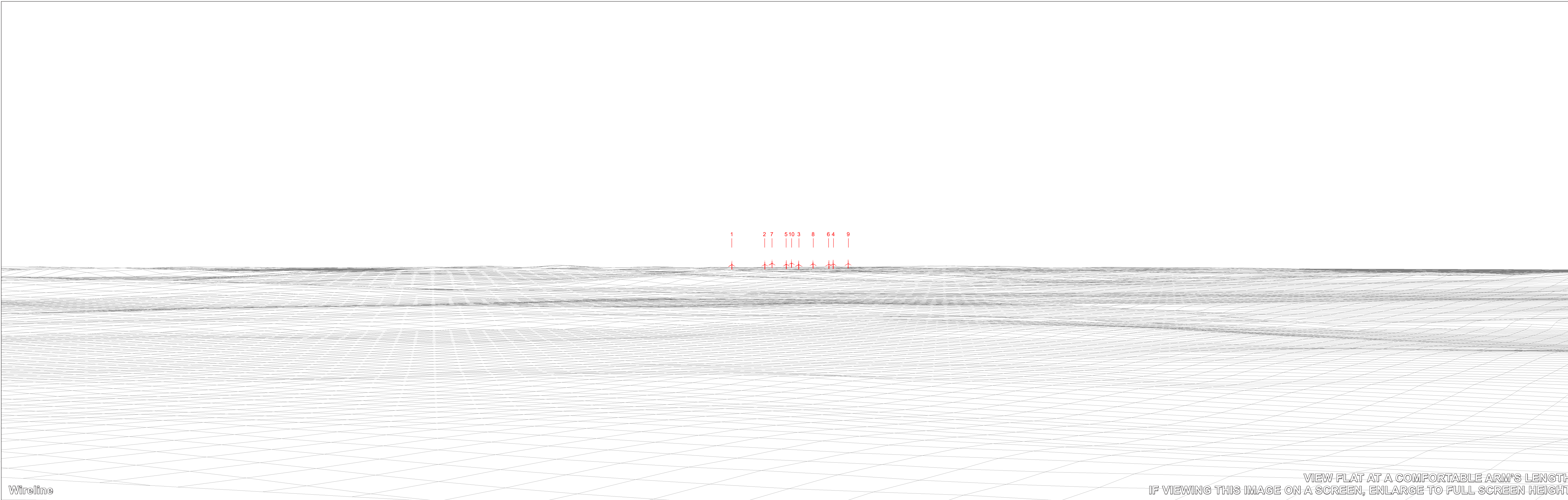
Photography Information	
Camera:	Nikon D810 36.3 - Full Frame
Lens:	50 mm Fixed Focal Length
Camera Height:	1.5 m
Photography Date:	09/08/2020
Photography Time:	19:40

Hollandmey Layout Information (turbine numbers on image)	
Layout:	Layout 2.4.WFL
Hub Height:	84 m
Height to Blade Tip:	149.9 m
Nearest Visible Turbine: ²	T4 @ 25.9 km
Number of sets of Tips Visible: ²	0
Number of Hubs Visible: ²	0

Legend	
■	Proposed Development
■	Operational/Under Construction
■	Consented
■	Application Submitted

Date	November 2021	By	AW
Image Size	820 x 130 mm	QA	MF
Paper Size	840 x 297 mm	Rev	2
<small>NS Baseline-90deg-EX-WF-REV02.indd</small>			

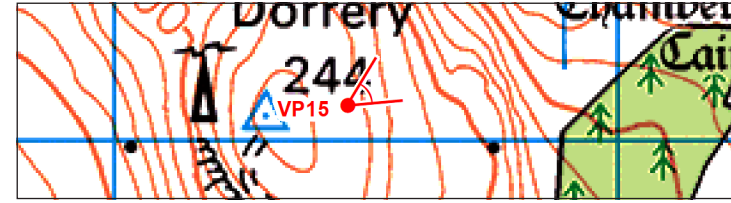
File: Ref:\000000 - Glasgow\662888 Hollandmey Wind Farm\04 - Layout\NS-53-5deg-WF-PM-REV02.indd - LTP - Hollandmey\00 Deliverables



Wireline

VIEW FLAT AT A COMFORTABLE ARM'S LENGTH
IF VIEWING THIS IMAGE ON A SCREEN, ENLARGE TO FULL SCREEN HEIGHT

Hollandmey Renewable Energy Development
Figure: 7.28-NS-03
Viewpoint 15: Ben Dorrery
Wireline Visualisation



Notes:
1) This visualisation is a planar projection panorama. View flat at a comfortable arm's length.
2) This data has been output directly from the wireline model. It ignores screening effects of woodland and other intervening objects.
3) All directions given as bearings relative to Grid North (BNG).
4) Location map scale: OS 1:50,000 mapping shown at 1:15,000.

Contains Ordnance Survey data © Crown copyright and database right 2021
© Crown copyright. All rights reserved. 2021 Licence number: 010031813

Viewpoint Information
Grid Reference: 306463E 955068N
Ground Height: 232 m AOD
Direction of Centre View: 3 58°
Horizontal Field of View: 53.5° (Planar Projection)
Vertical Field of View: 18.2°
Principal Distance: 812.5 mm

Hollandmey Layout Information (turbine numbers on image)
Layout: Layout 2.4.WFL
Hub Height: 84 m
Height to Blade Tip: 149.9 m
Nearest Visible Turbine: 2 T4 @ 25.9 km
Number of sets of Tips Visible: 2 10
Number of Hubs Visible: 2 10

Legend
Proposed Development

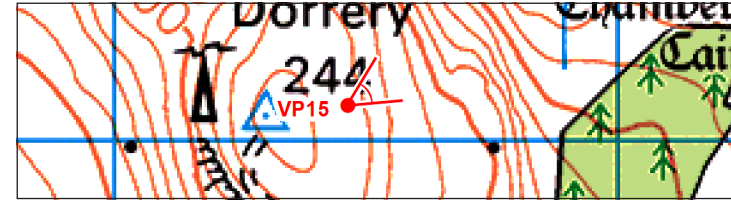
Date	November 2021	By	AW
Image Size	820 x 260 mm	QA	RA
Paper Size	840 x 297 mm	Rev	2
NS-53.5deg-WF-PM-REV02.indd			



Photomontage

VIEW FLAT AT A COMFORTABLE ARM'S LENGTH
IF VIEWING THIS IMAGE ON A SCREEN, ENLARGE TO FULL SCREEN HEIGHT

Hollandmey Renewable Energy Development
Figure: 7.28-NS-04
Viewpoint 15: Ben Dorrery
Photomontage Visualisation



Notes:
 1) This visualisation is a planar projection panorama. View flat at a comfortable arm's length.
 2) This data has been output directly from the wireline model. It ignores screening effects of woodland and other intervening objects.
 3) All directions given as bearings relative to Grid North (BNG).
 4) Location map scale: OS 1:50,000 mapping shown at 1:15,000.
 Contains Ordnance Survey data © Crown copyright and database right 2021
 © Crown copyright. All rights reserved. 2021 Licence number: 0100031813

Viewpoint Information
 Grid Reference: 306463E 955068N
 Ground Height: 232 m AOD
 Direction of Centre View: 3 58°
 Horizontal Field of View: 53.5° (Planar Projection)
 Vertical Field of View: 18.2°
 Principal Distance: 812.5 mm

Photography Information
 Camera: Nikon D810 36.3 - Full Frame
 Lens: 50 mm Fixed Focal Length
 Camera Height: 1.5 m
 Photography Date: 09/08/2020
 Photography Time: 19:40

Hollandmey Layout Information (turbine numbers on image)
 Layout: Layout 2.4.WFL
 Hub Height: 84 m
 Height to Blade Tip: 149.9 m
 Nearest Visible Turbine: 2 T4 @ 25.9 km
 Number of sets of Tips Visible: 2 10
 Number of Hubs Visible: 2 10

Date	November 2021	By	AW
Image Size	820 x 260 mm	QA	RA
Paper Size	840 x 297 mm	Rev	2
NS-53.5deg-WF-PM-REV02.indd			